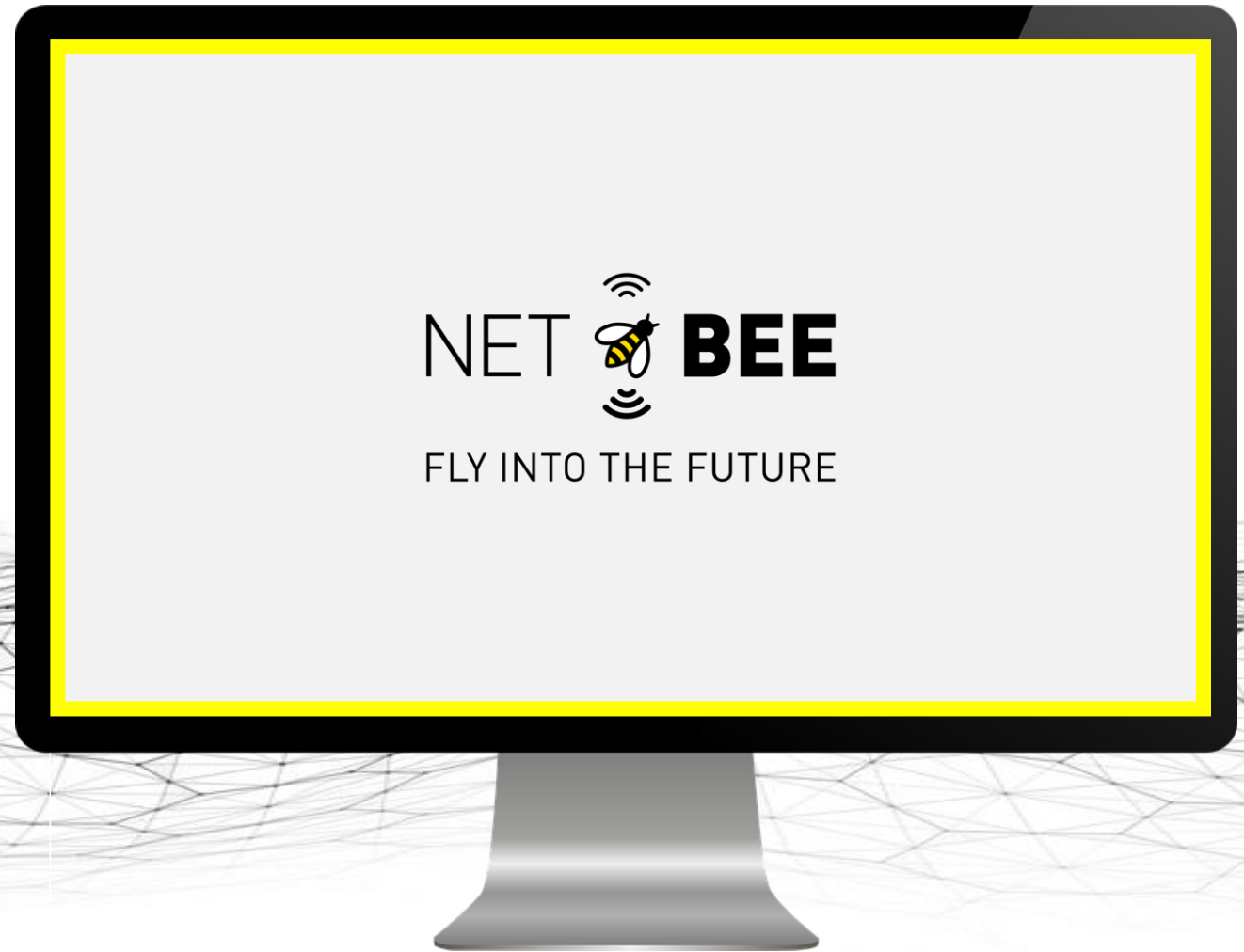


NET**BEE**

THE WORLD OF
IOT

NETBEE.CLOUD

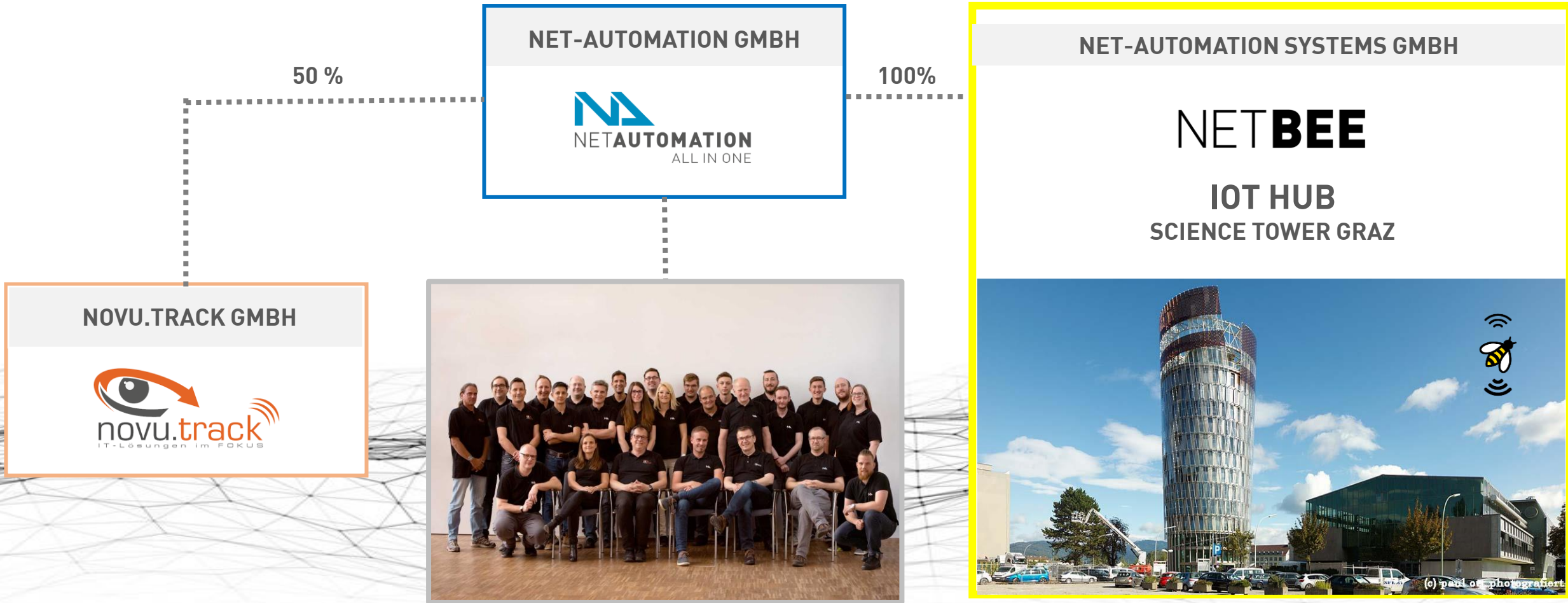


NET  BEE
FLY INTO THE FUTURE



CORPORATE STRUCTURE

NET-AUTOMATION GRUPPE



NET-AUTOMATION GMBH



100%

NET-AUTOMATION SYSTEMS GMBH

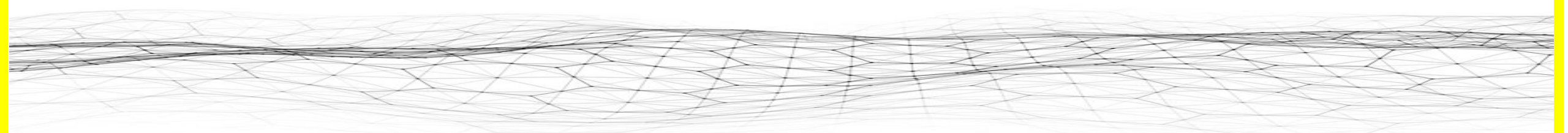
NETBEE

IOT HUB
SCIENCE TOWER GRAZ

NOVU.TRACK GMBH



NET **BEE**
PRODUCT FAMILY



NETBEE

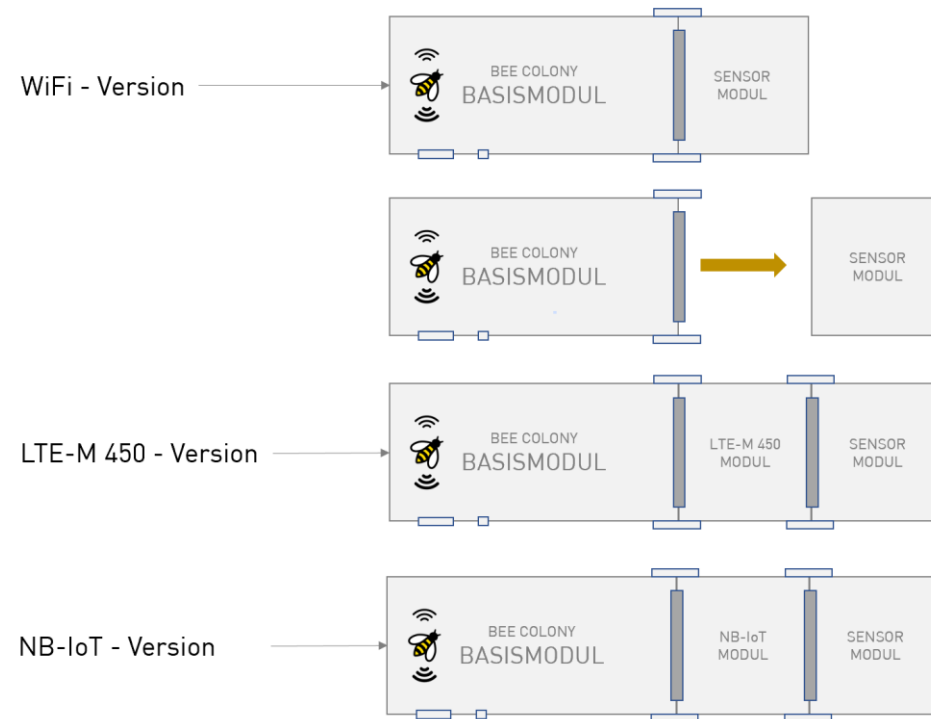
The **NETBEE BEE COLONY** product family is a programming-free, modular IoT hardware consisting of

- **Base Module**
- **LTE-M 450 Communication Module** with GPS
- **NB-IoT Communication Module** with GPS
- **Sensor Modules**



NETBEE – BEE COLONY

Flexible HARDWARE CONCEPT



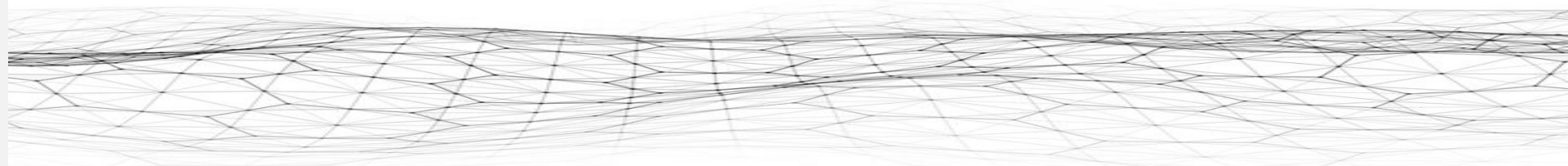
NETBEE

The **NETBEE BEE COLONY** modules are configured once and without programming using the free "Sensor Configuration Tool"



NETBEE

Innovative SOFTWARE CONCEPT



NETBEE



BEE COLONY

Safe Connectivity

The following communication modules are currently available. Further modules are individually developed by NET-Automation depending on the project requirements.



BEE COLONY BASISMODUL V1 - WiFi

5V Versorgung
Laderegler
USV
Leistungsfähiger Chipsatz

BEE COLONY BASISMODUL V2 - WiFi

5V Versorgung
Laderegler
USV
Leistungsfähiger Chipsatz
SD Speicherkarte



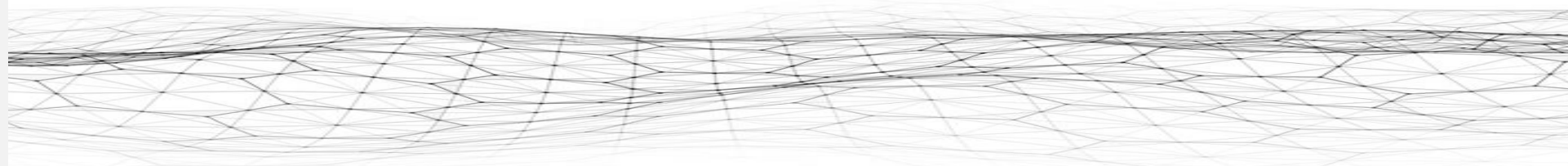
KOMMUNIKATIONSMODUL NB-IoT

SIMCOM SIM7000G
GPS



KOMMUNIKATIONSMODUL LTE-M 450

SIMCOM SIM7070E
GPS

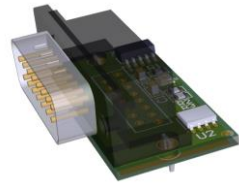


NETBEE



BEE COLONY

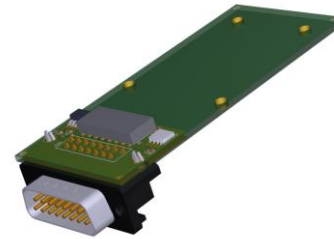
Smart SENSORS



BME280
Temperatur
Luftfeuchtigkeit
Luftdruck



SCD30
CO2
Temperatur
Luftfeuchtigkeit



RC522
RFID



OX-02-S
O2 Gehalt
O2 Partikeldruck
Temperatur



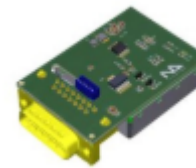
NB-DMS
Kräftemessung



Smart City
CO2
Temperatur
Luftfeuchtigkeit
Luftdruck
Geräuschpegel
Helligkeit
Neigung
Vibrationen



Distanz
Distanz bis 3m
Temperatur
Luftfeuchtigkeit
Luftdruck



Feinstaub
PM1.0
PM2.5
PM4
PM10
Temperatur
Luftdruck
Luftfeuchtigkeit

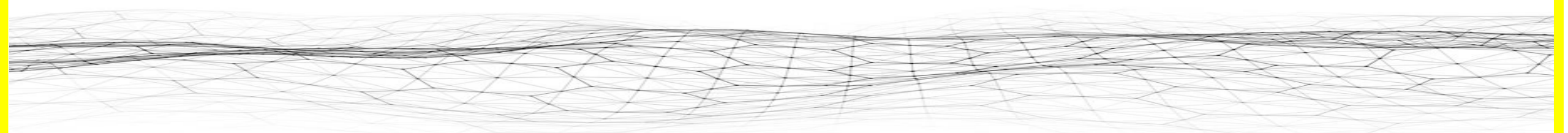


Analogeingang
4 x 4 – 20mA oder 0 -10 V

Folgende Sensoren sind derzeit für die NETBEE BEE COLONY Familie verfügbar.

Weitere Sensormodule werden je nach Projektanforderung von NET-Automation entwickelt.

NET **BEE** SOLUTIONS





AUTARK IoT
SMART CITY STATION

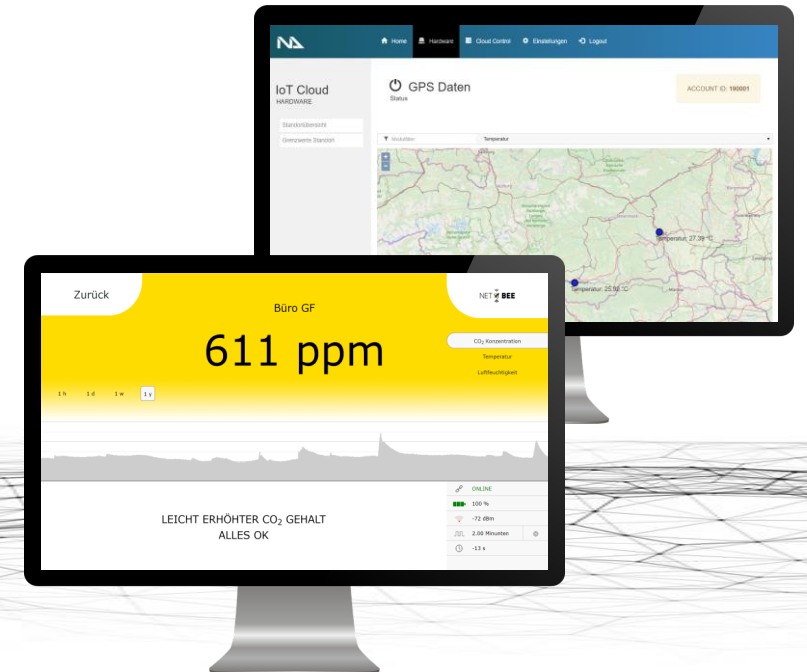
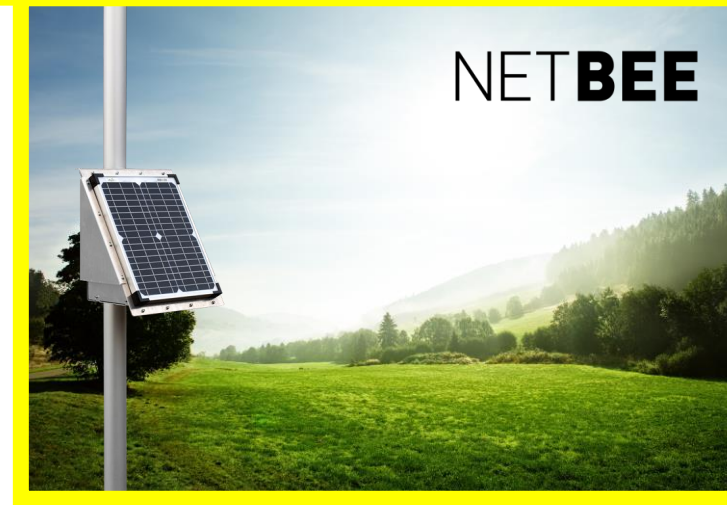
- ✓ Your SMART City is online in 10 minutes
- ✓ Increase life quality of your Citizens
- ✓ Savings in personnel and time expenditure

WEATHER DATA

Temperature	-40°C to 85°C	+/- 1.0°C
Humidity	0 to 100 % RH	+/- 3 %RH
Air pressure	300 to 1100 hPa +/- 1.0 hPa	

UMWELTDATEN

PM10	0.3µm to 10.0µm	+/-10µm/m ³
PM2.5	0.3µm to 2.5µm	+/-10µm/m ³
CO2	0 – 40.000 ppm	+/- 30 ppm
Noise level	0 – 120 Dezibel	





AUTARK IoT

SOIL MOISTURE STATION

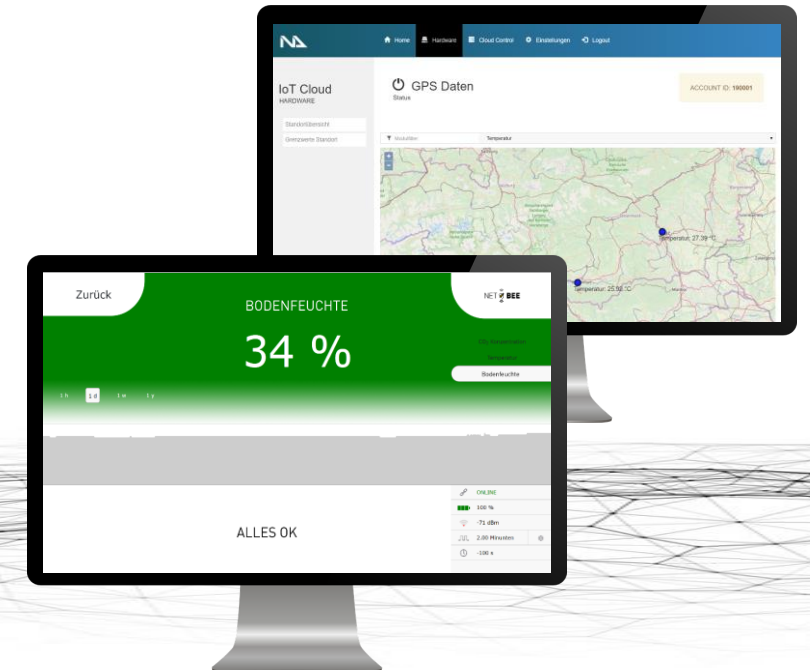
- ✓ Your Station is online in only 10 minutes
- ✓ All fields on one view
- ✓ Savings in personnel and time expenditure

WEATHER DATA

Temperature	-40°C to 85°C	+- 1.0°C
Humidity	0 to 100 % RH	+- 3 %RH
Air pressure	300 to 1100 hPa	+- 1.0 hPa

GROUND DATA

Soil moisture	0 to 100%	+-5%
---------------	-----------	------





AUTARK IoT ROAD MONITORING

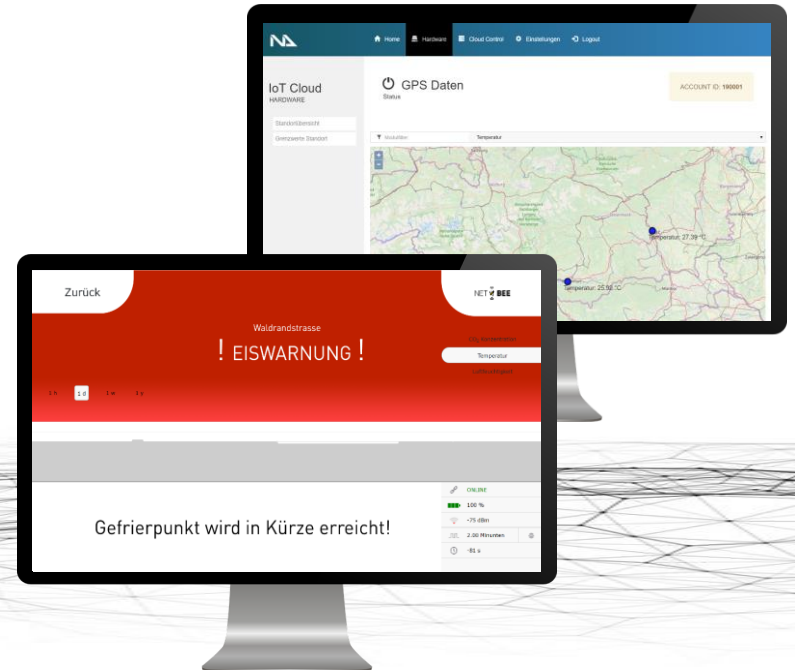
- ✓ Fulfillment of your obligation to provide evidence
- ✓ Overview of all streets
- ✓ Savings in personnel and time expenditure

WEATHER DATA

Temperature	-40°C to 85°C	+/- 1.0°C
Humidity	0 to 100 % RH	+/- 3 %RH
Air pressure	300 to 1100 hPa	+/- 1.0 hPa

ROAD Data

Road Temperature	-40°C to 85°C	+/- 1.0°C
Freezing point measured		+/- 1.0°C

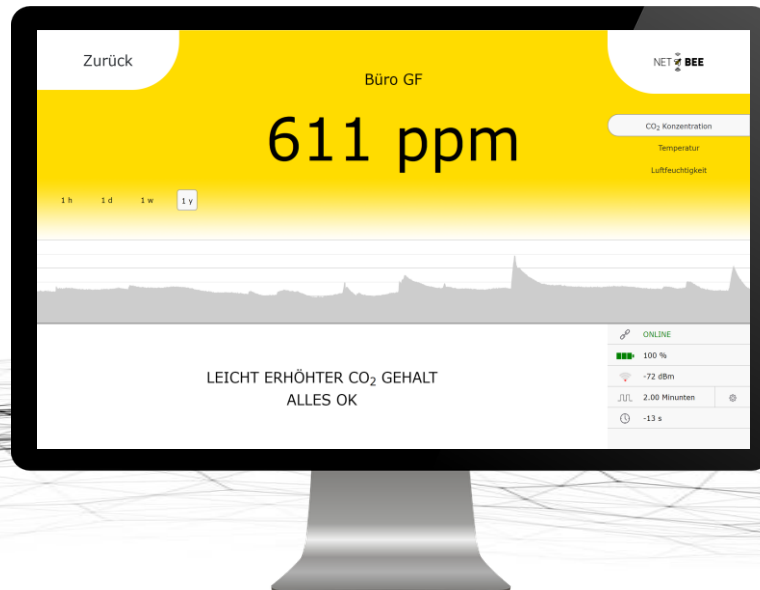




SMART INDOOR CO2 MEASUREMENT

PERFORMANCE AND HEALTH

- ✓ For home, office, classrooms, hotels and interiors
- ✓ Increase in performance and concentration
- ✓ Lowering the risk of infection for diseases



NET**BEE**

THE WORLD OF
IOT

NETBEE.CLOUD

